



# FRAME YOUR TV

BESPOKE ELEGANT SOLUTIONS FOR DISPLAYS

Innovative Viewing solutions for Residential and Commercial Applications

[FrameYourTV.co.uk](http://FrameYourTV.co.uk)

# ABOUT FRAME YOUR TV:

## WHEN

INNOVATING SINCE 2010

**Frame Your TV** has established itself as a leader in bespoke television framing solutions since **2010**. Based in the **United Kingdom**, our mission has always been to harmonize the latest in television technology with the unique aesthetic of your space.

## WHY

DEFINING ELEGANCE IN ENTERTAINMENT

Frame Your TV began with a vision to transform bulky screens into sleek decor pieces. From our founder's small workshop to a hallmark of luxury in home entertainment, we've redefined TVs as canvases that enhance and personalize your space.

## HOW

ART MEETS TECHNOLOGY

Tailoring viewing with artistic flair, Frame Your TV merges beauty with technology, crafting personalized frames that elevate your decor.





## WHY CHOOSE US?

At Frame Your TV, we specialise in seamlessly integrating televisions into any decor, enhancing both living and commercial spaces. Our bespoke solutions, including Mirror TV and Artwork TV, transform ordinary screens into decorative mirrors or art pieces when not in use. Trusted by clients like Unilever and Yahoo!, we combine craftsmanship with modern technology to deliver high-quality, tailored services from design to installation.

## OUR NOTABLE PROJECTS



### UNILEVER

We enhanced Unilever's corporate spaces with custom TV integration solutions, blending stylish design with functional installations that perfectly matched their modern office decor.



### SAMSUNG

For Samsung, we specialised in showcasing 'The Frame' TV in high-end residential and commercial settings, ensuring an elegant integration that highlights both the product's aesthetic appeal and technological features.



### NIKE

Our work with Nike involved creating bespoke TV frames for their flagship stores, aligning with their contemporary design and enhancing the overall customer experience by integrating TVs seamlessly into the store's visual identity.

# HOW IT WORKS

At Frame Your TV, we follow a meticulous five-stage process to ensure your television integrates perfectly with your decor:



## 1 CONSULTATION

We begin with a detailed consultation to understand your vision and requirements. This helps us tailor our services to match your specific needs and preferences.



## 2 DESIGN

Our design team creates a customised plan, selecting the ideal materials, colours, and finishes to ensure your TV frame or mirror TV complements your space seamlessly.



## 3 TV SELECTION

We assist you in choosing the right television that best fits your requirements, whether it's a Mirror TV, Artwork TV, or any other model that suits your aesthetic and functional needs.



## 4 CRAFTSMANSHIP

Our skilled artisans bring the design to life, combining traditional craftsmanship with modern technology to create a bespoke solution that meets our high standards of quality and elegance.



## 5 DELIVERY OR INSTALLATION

Finally, we deliver and install your custom TV frame or mirror TV, ensuring everything is perfectly set up and integrated into your space. Our team handles every detail to provide a hassle-free experience.

Experience the seamless integration of technology and art with FrameYourTV's comprehensive service, designed to transform your space beautifully.

# TABLE OF CONTENTS

06	MIRROR TV SOLUTIONS
08	MUSEUM QUALITY ORNATE TV MIRROR FRAMES
10	CONTEMPORARY COLLECTION
15	TRADITIONAL COLLECTION
17	HARDWOOD
18	OVERMANTEL MIRROR TVS
20	KITCHEN MIRROR TV
22	GYM TV MIRROR
24	BATHROOM TV MIRRORS
26	LUXURY TV MIRRORS
31	FIREPLACE CLADDING MIRROR TV
33	RETROFIT MIRROR TVS
35	SAMSUNG THE FRAME
38	MOTORISED ARTWORK TV FRAMES
41	BESPOKE HIGH BRIGHTNESS 4K SMART TVS (LUXVIEW)
43	TV MOUNTS & INSTALLATIONS
46	TESTIMONIALS
47	SECTORS
48	WARRANTY & SUPPORT
49	FREQUENTLY ASKED QUESTIONS (FAQS)
51	GET IN TOUCH





# MIRROR TV SOLUTIONS



## MIRROR TV FRAMES

Our comprehensive range of Frame Styles showcases everything from the discreet elegance of a slim profile to opulent, Museum Quality Ornate frames. With each category offering unique features and customisable options, discover how we blend art and technology to transform your viewing experience.



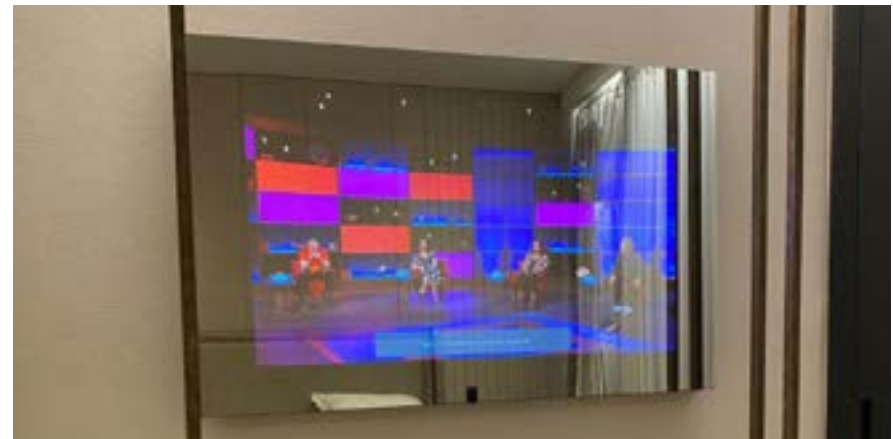
## KITCHEN SPLASHBACK TV MIRROR

With our Kitchen Splashback you can seamlessly integrate a TV within your kitchen. This saves you space and creates that WOW factor for the kitchen you are designing. You can choose from a variety of different Dielectric TV Mirror Glass Types. We offer bespoke design and installation using glass that is heat resistant if above a heat source.



## OVERMANTEL TV MIRRORS

Designed to be the centerpiece of any room, the Overmantel Mirror TV is both a stunning mirror and a state-of-the-art television, providing a dual experience like no other.



## FRAMELESS TV MIRRORS

Frame Your TV can offer Frameless TV Mirrors for different applications and in all shapes and sizes. With Different Dielectric Mirror TV Glass Options to choose from and Brackets that allow access to the TV, those who want the minimalistic look of just glass this is for you.

# MIRROR TV SOLUTIONS



## GYM TV MIRROR

In every gym there are mirrors and there are TV's. It makes perfect sense to combine the two together to create a seamless design. Frame Your TV offers a bespoke solution to incorporate TV's within special dielectric TV mirror glass or a combination of regular mirror glass and TV mirror glass.



## FIREPLACE CLADDING TV MIRROR

Frame Your TV offers bespoke solutions to cover a fireplace and incorporate a TV within a special Dielectric Mirror Glass. We can offer bespoke design and installation using glass that is heat resistant. When off, the TV will disappear within the Mirror Glass, creating a stunning and elegant design.



## LUXURY TV MIRROR FRAMES

Our Luxury Mirror TVs are the epitome of sophistication, offering custom finishes and the finest materials to complement the most luxurious of spaces.



## RETROFIT TV MIRROR FRAMES

Uptat que arum erumquodit aut as nonsedi tatibeatur, omni voluptati ut aut doluptatur, cupiati voluptatur si omnis sitati vidunt busapid ut qui de volorectur, inisimporro ex est volorum nihit, non niaspie ndundani nonectur saepe expellaut dent et am voluptis sandellab int.

# MUSEUM QUALITY ORNATE TV MIRROR FRAMES

All our Ornate Frames are made to the highest of standards and come in different finishes such as 24K Gold Leaf, white gold leaf or metal silver leaf or painted in gold, silver, antique gold and antique silver and custom options as well.



**SURREY**

Dimensions: 90mm Face width.  
[Click for more info](#)



**CARLO**

Dimensions: 100 mm Face width.  
[Click for more info](#)



**THE EQUISITIE**

Dimensions: 135mm Face width.  
[Click for more info](#)



**THE DOUBLE SWEPT**

Dimensions: 90mm Face width.  
[Click for more info](#)



**THE FLEMISH**

Dimensions: 135mm Face width.  
[Click for more info](#)



**THE PATTERNA**

Dimensions: 90mm Face width.  
[Click for more info](#)



## MUSEUM QUALITY ORNATE TV MIRROR FRAMES



### THE KINGSTON

Dimensions: 90mm Face width.  
Ornaments protrude 50mm  
[Click for more info](#)



### THE REGENCY

Dimensions: 100mm Face width.  
[Click for more info](#)



### THE BARBICAN

Dimensions: 135mm Face width.  
[Click for more info](#)

## AVAILABLE FINISHES

● Painted Gold

● Antique Gold

● 24k Gold Leaf

● Painted Silver

● Silver Leaf

● White Gold Leaf

### CUSTOM COLOUR

We can paint any colour or finish get in touch to discuss.

## CONTEMPORARY COLLECTION



NEW YORK BRONZE

Dimensions: 70mm Face width.  
[Click for more info](#)



NEW YORK SILVER

Dimensions: 70mm Face width.  
[Click for more info](#)



NEW YORK GOLD

Dimensions: 70mm Face width.  
[Click for more info](#)



NEW YORK BLACK

Dimensions: 70mm Face width.  
[Click for more info](#)



NEW YORK WHITE

Dimensions: 70mm Face width.  
[Click for more info](#)

## CONTEMPORARY COLLECTION



EVEREST GOLD

Dimensions: 70mm Face width.  
[Click for more info](#)



EVEREST LIGHT GOLD

Dimensions: 70mm Face width.  
[Click for more info](#)



EVEREST BRONZE

Dimensions: 70mm Face width.  
[Click for more info](#)



EVEREST BLACK

Dimensions: 70mm Face width.  
[Click for more info](#)



EVEREST SILVER

Dimensions: 70mm Face width.  
[Click for more info](#)



## CONTEMPORARY COLLECTION



SOHO BLACK

Dimensions: 52mm Face width.  
[Click for more info](#)



SOHO BLACK SILVER

Dimensions: 52mm Face width.  
[Click for more info](#)



SOHO BLACK GOLD

Dimensions: 52mm Face width.  
[Click for more info](#)



THE DOME BLACK

Dimensions: Facewidth: 63mm  
[Click for more info](#)



STONEHENGE SILVER

Dimensions: 90mm Face width.  
[Click for more info](#)



LAS VEGAS

Dimensions: 64mm Face width.  
[Click for more info](#)

## CONTEMPORARY COLLECTION



HAMILTON PEARL

Dimensions: 63mm Face width.  
[Click for more info](#)



HAMILTON BRONZE

Dimensions: 63mm Face width.  
[Click for more info](#)



HAMILTON SAND

Dimensions: 63mm Face width.  
[Click for more info](#)



LILLE PEWTER

Dimensions: 80mm Face width.  
[Click for more info](#)



LILLE SILVER

Dimensions: 80mm Face width.  
[Click for more info](#)



LILLE GOLD

Dimensions: 80mm Face width.  
[Click for more info](#)

## CONTEMPORARY COLLECTION



**MALAGA WHITE**

Dimensions: 70mm Facewidth

[Click for more info](#)



**MONACO WHITE**

Dimensions: 114mm Facewidth

[Click for more info](#)



**SQUARE WHITE**

Dimensions: 53mm Facewidth

[Click for more info](#)



**SYDNEY GOLD**

Dimensions: Depth 41mm Width 65mm

[Click for more info](#)



**SYDNEY BLACK INNER SILVER**

Dimensions: Depth 41mm Width 65mm

[Click for more info](#)



**SYDNEY SILVER**

Dimensions: Depth 41mm Width 65mm

[Click for more info](#)



## TRADITIONAL COLLECTION



**WARWICK WHITE GOLD**

Dimensions: Natural depth 45mm Width 74mm  
[Click for more info](#)



**WARWICK GOLD**

Dimensions: Natural depth 45mm Width 74mm  
[Click for more info](#)



**WARWICK BLACK GOLD**

Dimensions: Natural depth 45mm Width 74mm  
[Click for more info](#)



**SEVILLA**

Dimensions: 87mm Face width  
[Click for more info](#)



**SEVILLA SLIM**

Dimensions: Also available in Slim 62mm  
[Click for more info](#)



**SENELAR IVORY GOLD**

Dimensions: 104mm Face width.  
[Click for more info](#)

## TRADITIONAL COLLECTION



**PRAGUE BROWN GOLD**

Dimensions: 90mm Facewidth.

[Click for more info](#)



**PRAGUE GREY SILVER**

Dimensions: 90mm Facewidth.

[Click for more info](#)



**REGENT GOLD**

Dimensions: 79mm Facewidth.

[Click for more info](#)



**ATHENS**

Dimensions: 80mm Facewidth.

[Click for more info](#)

# HARDWOOD



## VENEER

Dimensions: 90mm Facewidth.

[Click for more info](#)



## FLATENIUM

Dimensions: 100mm Facewidth.

[Click for more info](#)



## LA CLASSICO

Dimensions: 90mm Face width.

[Click for more info](#)



## 3DTIONAL

Dimensions: 100mm Face width.

[Click for more info](#)



# OVERMANTEL MIRROR TVS

Designed to be the centerpiece of any room, the Overmantel Mirror TV is both a stunning mirror and a state-of-the-art television, providing a dual experience like no other.



## THE SAVILLE ROW

A perfect blend of timeless elegance and contemporary style.

This exquisite Mirror TV Frame features a smooth and clean design with a gracefully arched top, creating a stunning focal point for any space.

Simple and highly elegant, The Savile Row Overmantle Mirror TV Frame effortlessly transcends design boundaries, seamlessly fitting into both traditional and modern interiors. Its versatile aesthetic ensures that it enhances the beauty of any room, adding a touch of sophistication and refinement.

Crafted with meticulous attention to detail, the The Savile Row Overmantle Mirror TV Frame boasts a seamless and polished finish. It creates a mirror that not only reflects your image but also reflects your impeccable taste in decor.

The arched top adds a touch of architectural flair, elevating the overall design and making it a statement piece for your home.

Like all our Bespoke TV Frames, this frame can be tailored to your liking by adjusting the overall height, width and finish.



## Louis XIV Overmantel Mirror TV

Where innovation meets timeless elegance.

This exquisite piece seamlessly merges the classic charm of an arched top adorned with intricate ornaments, and the modern functionality of concealing a TV within its frame. Elevate your living space with a touch of luxury and versatility.

The arched top of the Louis XIV Overmantle Mirror TV Frame is a canvas for finely crafted, intricate ornaments, adding a layer of French sophistication to the overall design.

## LOUIS XIV



## The Louis Philippe Overmantel Mirror TV

A timeless masterpiece that seamlessly blends elegance and functionality to elevate your living space. Crafted with precision and attention to detail, this Overmantle Mirror TV frame is designed to be the focal point of any room, adding a touch of sophistication to your home décor.

The arched top of the mirror frame exudes a classic charm, creating a sense of grandeur that enhances the overall aesthetic of your space. The carefully placed handle ornaments on the base contribute to the frame's ornate design, reflecting a perfect balance of form and function.

Whether you place it above a fireplace, console table, or as a standalone piece, the Louis Philippe Overmantle Mirror TV Frame adds a touch of sophistication to any room. Its versatile design complements a variety of interior styles, from traditional to contemporary, making it a perfect addition to your home.

## THE LOUIS PHILIPPE



# KITCHEN MIRROR TV

Some of our great projects in Kitchen splashback TVs.



## KITCHEN SPLASHBACK

Transform your kitchen into a modern marvel with our innovative Kitchen Splashback Mirror TVs. Combining sleek design with cutting-edge technology, these Mirror TVs not only enhance your kitchen's aesthetics but also provide a seamless viewing experience. Available in three stunning glass finishes—grey, normal mirror, and bronze—these custom-manufactured TVs are purposely built to be integrated within the wall, offering a flawless, streamlined look.

## KEY FEATURES:

### 1. Elegant Glass Finishes:

- Grey Glass: Adds a contemporary touch to your kitchen, blending sophistication with subtlety.
- Normal Mirror: Classic and versatile, this finish seamlessly complements any kitchen style, reflecting light and space beautifully.
- Bronze Glass: Infuses warmth and elegance, creating a rich and inviting atmosphere in your culinary space.

### 2. Custom Manufactured:

- Tailored Design: Each Mirror TV is custom-manufactured to fit your specific kitchen dimensions and design preferences.
- Wall Integration: Built to be buried within the wall, our Mirror TVs ensure a sleek, unobtrusive installation that maximizes space and style.

### 3. Advanced Technology:

- High-Definition Display: Enjoy crisp, clear visuals with our high-definition screens, perfect for watching cooking shows, following recipes, or catching up on the news.

### 4. Comprehensive Service:

- Installation: Our expert technicians provide professional installation, ensuring your Mirror TV is perfectly integrated into your kitchen space.
- Site Survey: We offer a thorough site survey to assess your kitchen's layout and determine the best installation approach, ensuring optimal performance and aesthetics.



# KITCHEN MIRROR TV



SPLASHBACK MIRROR TV HEAT RESISTANT

## WHY CHOOSE OUR KITCHEN SPLASHBACK MIRROR TVs?

**Aesthetic Appeal:** Our Mirror TVs elevate your kitchen's design, offering a seamless blend of style and functionality. The choice of glass finishes allows you to customize the look to match your kitchen's decor.

**Space-Saving Solution:** By integrating the TV within the wall, you save valuable counter space and maintain a clean, clutter-free environment.

**Versatility:** Whether you're a culinary enthusiast or simply enjoy having entertainment at your fingertips, our Mirror TVs cater to your lifestyle needs.

**Quality Assurance:** With meticulous craftsmanship and the latest technology, our Mirror TVs are built to last, providing you with a reliable and luxurious addition to your home.

## EXPERIENCE THE FUTURE OF KITCHEN DESIGN

Enhance your kitchen with our state-of-the-art Splashback Mirror TVs. Contact us today to schedule a site survey and discover how our custom solutions can transform your culinary space into a stylish, modern haven.

# GYM TV MIRROR

Transform your fitness space with our cutting-edge Gym Mirror TVs, designed to seamlessly integrate entertainment and functionality into your workout environment. Our Mirror TVs are available in a variety of finishes—Dielectric, Grey Dielectric, and Bronze Dielectric—and can be custom-manufactured to be buried within the wall, providing a sleek, unobtrusive look. Additionally, we offer the option to combine normal mirrors with our Dielectric TVs for a truly unique aesthetic.



## KEY FEATURES:

### 1. Stunning Glass Finishes:

- **Vanity Dielectric Mirror:** This innovative glass looks just like a standard mirror but conceals a high-definition TV behind it. Ideal for maintaining a clean, elegant look while offering top-notch viewing.
- **Grey Dielectric:** Offers a modern, subtle touch, perfect for contemporary gyms, blending seamlessly with various color schemes.
- **Bronze Dielectric:** Adds a touch of sophistication and warmth, creating a luxurious atmosphere in any fitness space.

**luxurious atmosphere in any fitness space.**

### 2. Versatile Design Options:

**Combination Mirrors:** We can seamlessly integrate normal mirrors alongside our Dielectric TVs, allowing for a perfect blend of functionality and style.

**Custom Manufacturing:** Our Gym Mirror TVs are custom-built to your specifications, ensuring a perfect fit within your space. Designed to be embedded within the wall, these TVs provide a clean, seamless look that enhances the aesthetics of any gym.

### 3. Advanced Technology:

- **High-Definition Display:** Enjoy sharp, clear visuals with our state-of-the-art high-definition screens, ideal for watching workout tutorials, live sports, or your favorite TV shows while you train.

### 4. Comprehensive Service:

- **Installation & Site Survey:** Our team of experts provides professional installation services, including a thorough site survey to assess your gym's layout and determine the best installation approach.
- **Full Drawings & Documentation:** We supply detailed drawings and documentation to ensure that every aspect of the installation is meticulously planned and executed.
- **Project Management:** From concept to completion, our dedicated project managers oversee every step of the process, ensuring a smooth, hassle-free experience.

# GYM TV MIRROR



## WHY CHOOSE OUR GYM MIRROR TVs?

**Sleek, Modern Aesthetics:** Our Mirror TVs are designed to enhance the look of your gym, providing a sleek, modern finish that complements any decor. The choice of Dielectric, Grey, and Bronze finishes allows for endless design possibilities.

**Space-Saving Innovation:** By integrating the TV within the wall, our Gym Mirror TVs save valuable space, maintaining a clean, uncluttered workout area.

**Enhanced Workout Experience:** Whether you're following a fitness video, catching up on the news, or watching your favorite shows, our Mirror TVs make your workout sessions more enjoyable and motivating.

**Reliable Performance:** Built with high-quality materials and advanced technology, our Gym Mirror TVs are designed to withstand the rigors of a busy gym environment, providing reliable performance and long-lasting durability.

## ELEVATE YOUR FITNESS SPACE

Experience the future of gym design with our innovative Gym Mirror TVs. Contact us today to schedule a site survey and explore how our custom solutions can elevate your workout space. Our team is ready to assist with full project management, detailed drawings, and seamless installation, ensuring that your vision becomes a reality. Let's transform your gym into a state-of-the-art fitness haven!



# BATHROOM TV MIRRORS

## Enhance Your Bathroom with Innovative Mirror TVs



Transform your bathroom into a luxurious retreat with our state-of-the-art Bathroom Mirror TVs. Combining sleek design with cutting-edge technology, our Mirror TVs offer the perfect blend of style and functionality. Available in Dielectric, Grey Dielectric, and Bronze Dielectric finishes, these waterproof, custom-manufactured TVs are designed to be seamlessly integrated within your bathroom wall.

### KEY FEATURES:

#### 1. Exquisite Glass Finishes:

- **Vanity Dielectric Mirror:** Looks just like a standard mirror but conceals a high-definition TV behind it, maintaining a sleek and elegant look while providing top-notch viewing.
- **Grey Dielectric:** Adds a modern, sophisticated touch, perfect for contemporary bathroom designs and blending effortlessly with various color schemes.
- **Bronze Dielectric:** Introduces a warm, luxurious ambiance, creating an inviting and stylish bathroom space.

#### 2. Custom Manufacturing:

**Tailored Design:** Each Bathroom Mirror TV is custom-manufactured to your specific dimensions and design preferences, ensuring a perfect fit.

**Wall Integration:** Built to be buried within the wall, our Mirror TVs provide a seamless, unobtrusive installation, enhancing the aesthetics of your bathroom.

#### 3. Advanced Technology:

- **Waterproof TVs:** Engineered to withstand the humid bathroom environment, our TVs are fully waterproof, ensuring durability and long-lasting performance.
- **High-Definition Display:** Enjoy crisp, clear visuals with our high-definition screens, perfect for watching the news, your favorite shows, or relaxing with a movie while soaking in the tub.

#### 4. Comprehensive Service:

- **Installation & Site Survey:** Our team of experts offers professional installation services, including a thorough site survey to assess your bathroom's layout and determine the best installation approach.
- **Full Drawings & Documentation:** We provide detailed drawings and documentation to ensure every aspect of the installation is meticulously planned and executed.
- **Project Management:** From concept to completion, our dedicated project managers oversee every step of the process, ensuring a smooth, hassle-free experience.



# BATHROOM TV MIRRORS



## WHY CHOOSE OUR BATHROOM MIRROR TVs?

**Elegant Aesthetic:** Our Mirror TVs enhance the look of your bathroom, providing a sleek, modern finish that complements any decor. The choice of Dielectric, Grey Dielectric, and Bronze Dielectric finishes allows for endless design possibilities.

**Space-Saving Innovation:** By integrating the TV within the wall, our Bathroom Mirror TVs save valuable space, maintaining a clean, clutter-free environment.

**Luxurious Experience:** Whether you're getting ready for the day, unwinding after a long day, or enjoying a relaxing bath, our Mirror TVs enhance your bathroom experience, adding a touch of luxury and convenience.

**Reliable Performance:** Built with high-quality materials and advanced technology, our Bathroom Mirror TVs are designed to withstand the rigors of a humid bathroom environment, providing reliable performance and long-lasting durability.

## TRANSFORM YOUR BATHROOM TODAY

Experience the ultimate in bathroom luxury with our innovative Bathroom Mirror TVs. Contact us today to schedule a site survey and discover how our custom solutions can elevate your bathroom space. Our team is ready to assist with full project management, detailed drawings, and seamless installation, ensuring that your vision becomes a reality. Let's transform your bathroom into a state-of-the-art sanctuary!

# LUXURY TV MIRRORS

Our Luxury Mirror TVs are the epitome of sophistication, offering custom finishes and the finest materials to complement the most luxurious of spaces.



## 3DI MIRRORED TV FRAME

At the heart of The 3Di Mirrored TV Frame lies the Bespoke Dielectric Mirror TV Glass, a marvel of engineering that transforms your television into a stylish mirror when not in use. Immerse yourself in the beauty of your surroundings while discreetly concealing your TV, achieving a sleek and polished look that adapts effortlessly to your interior decor.

Tailored to meet your unique needs, our frame can be crafted in any bespoke size, accommodating a wide range of TV models seamlessly. Whether you have a compact space or a sprawling entertainment area, 3Di Mirrored TV Frame is designed to complement your lifestyle, ensuring a perfect fit for any television.

Constructed with precision and using top-grade aluminum, 3Di guarantees durability and longevity. The frame not only serves as a functional piece of technology but also as a statement of sophistication in your home.

Experience the future of home entertainment with the 3Di Mirrored TV Frame, where every moment is a blend of style and innovation.

# LUXURY TV MIRRORS



## CIRCULAR MIRROR TV

Enjoy both a full-featured television and an elegant mirror in one stylish package.

This versatile product seamlessly integrates technology into your living space. When turned off, the Circular Mirror TV functions as a high-quality mirror, adding a touch of sophistication to any room.

With a simple touch of a button, the mirror reveals a 4K Smart TV. Enjoy your favorite TV shows, movies, sports events, and more.

Choose from a selection of Dielectric Mirror TV Glass Finishes to fit your decor.

Wooden circular side depths painted in a colour of your choice. Gold, black and silver come as standard colours. Get in touch with us if you require matching a specific colour.

Add ons:

Circular side depths in 24K Gold Leaf, White Gold Leaf or Silver Metal Leaf

Aluminium side depths

Additional External Circular Glass Panel to create a 2 Layers Round Mirror TV

# LUXURY TV MIRRORS



## LEATHER AND FABRIC MIRROR TV FRAME

### Luxurious Material Options:

Choose from premium faux leather or fabric to craft the perfect aesthetic for your space. The exquisite materials not only add a touch of elegance but also provide a protective layer for your TV, ensuring a seamless integration into your home decor.

### Customizable Design:

The beauty of our TV frame lies in its flexibility. Whether you prefer a sleek flat face or a gracefully curved design, we've got you covered. Tailor the frame to suit your taste, ensuring it complements the overall ambiance of your living room or entertainment space.

### Material Sourcing Options:

Opt for the convenience of having us provide the leather or fabric for your TV frame, ensuring a perfect match with our curated selection. Alternatively, unleash your creativity by supplying your own material, allowing you to personalize the frame to align with your unique style.

### Bespoke Sizing:

Your TV deserves a frame that fits like a glove. Our Leather and Fabric TV Frames are available in a range of sizes, catering to the dimensions of your TV or even larger, creating a statement piece that captivates and enhances your viewing experience.

### Easy Installation:

Our frames are designed with user-friendliness in mind. Enjoy a hassle-free installation process, allowing you to effortlessly elevate the look of your TV without the need for professional assistance.

### Available Sizes:

Our Leather and Fabric TV Frames are crafted to accommodate various TV sizes. Whether you have a compact screen or a larger-than-life display, we offer options that cater to the viewing area of your TV or can be extended for an even grander presence.

Transform your TV into a work of art with our Leather and Fabric TV Frame. Elevate your home entertainment experience while enjoying the freedom to customize every detail. Embrace luxury, style, and innovation in one seamless package.



# LUXURY TV MIRRORS



## BEVELLED EDGE MIRRORED TV FRAME

Introducing our exquisite Bevelled Edge Mirrored TV Frame – the epitome of sophistication and functionality designed to elevate your TV-viewing experience to new heights. Crafted with precision and elegance, this frame seamlessly combines style and practicality to complement your home decor.

### Tailored for TVs:

This Mirrored TV Frame is purpose-built to enhance the aesthetics of your television, offering a perfect blend of functionality and beauty.

Choose from the normal Samsung QLED Neo TV or elevate your viewing experience with the professional solution of LuxView High Brightness TVs, expertly manufactured to be placed behind the dielectric mirror TV glass, ensuring a seamless integration with your interior design.

### Customizable Facewidth:

Make a statement with a frame that suits your style. The facewidth of the frame is customizable, ranging from 70 to 100 mm, allowing you to create a personalized look for your entertainment space.

The max bevel of 10mm adds an extra touch of sophistication.

### Premium Materials:

Our Mirrored Frame features high-quality materials, including a High Reflective dielectric mirror TV glass for the screen and normal mirror for the frame. For those seeking a unique touch, feel free to get in touch with us for a different shade of mirror or a specialized mirror screen.

# LUXURY TV MIRRORS



## CURVED OVERMANTLE

Our Curved Overmantle Mirror TV Frame is a true masterpiece of design. The gentle, sweeping curves create a harmonious and visually striking focal point in any room. It exudes sophistication and timeless elegance, making it the perfect addition to both modern and classic interiors.

We understand that every home is unique. That's why our Overmantle Mirror TV Frames are available in a variety of sizes and finishes, allowing you to customize it to perfectly match your decor. Get in touch with us to discuss your requirements.

With a concealed TV behind the mirrored surface, you have the power to transform your TV into a work of art with the touch of a button. When not in use, your television vanishes, leaving behind a stunning mirror that enhances the beauty of your space.

# FIREPLACE CLADDING MIRROR TV

Transform Your Space with Elegance and Innovation



Introducing the Fireplace Cladding Mirror TV, the ultimate fusion of luxury and technology designed to elevate your living space. This unique product combines the timeless elegance of a mirror with the modern convenience of a hidden television, seamlessly integrating into any interior décor. Whether you're updating your living room, bedroom, or even a bathroom, the Fireplace Cladding Mirror TV is the perfect addition for a sophisticated, clutter-free aesthetic.

## VERSATILE GLASS OPTIONS FOR YOUR UNIQUE STYLE

Our Fireplace Cladding Mirror TV is available in several glass types to suit your personal style and design needs:

- **Vanity Mirror Glass:** This option looks like a regular mirror, providing a flawless reflection when the TV is off. It's perfect for spaces where you want a clean, unobtrusive look, such as bathrooms or dressing areas.
- **Grey Dielectric TV Mirror Glass:** For a sleek, modern appearance, the Grey Dielectric TV Mirror Glass offers a subtle tint that enhances your room's décor while still providing a clear, vibrant display when the TV is on. Ideal for contemporary spaces with a minimalist design.
- **Bronze Dielectric TV Mirror Glass:** Add warmth and richness to your space with the Bronze Dielectric TV Mirror Glass. This option provides a warm, luxurious tint that complements traditional and rustic interiors, while still delivering an exceptional viewing experience when the TV is in use.

## KEY FEATURES:

- **Hidden TV Integration:** The television is concealed behind the mirror, becoming completely invisible when turned off. Enjoy the convenience of modern technology without compromising your interior design.
- **Customisable Sizes:** Available in a variety of sizes to fit any space, from compact areas to expansive walls.
- **High-Definition Display:** Experience stunning picture quality with our high-definition screens, ensuring your favourite shows and films look their best.
- **Easy Installation:** Our Fireplace Cladding Mirror TV is designed for straightforward installation, with comprehensive instructions and support provided.
- **Durable Construction:** Built with premium materials to ensure long-lasting durability and elegance.

# FIREPLACE CLADDING MIRROR TV



## WHY CHOOSE FIREPLACE CLADDING MIRROR TV?

- **Space-Saving Design:** Eliminate the need for separate mirrors and TVs, freeing up valuable space and reducing clutter.
- **Versatile Aesthetics:** With multiple glass options, you can match your Fireplace Cladding Mirror TV to any décor style, from modern to traditional.
- **Seamless Integration:** The perfect solution for creating a sophisticated, tech-enhanced environment without visible technology dominating the room.

Elevate your home with the Fireplace Cladding Mirror TV, the ultimate blend of style and functionality. Choose from our selection of glass types to perfectly match your décor and enjoy a seamless, elegant addition to any room. Experience the future of home entertainment and design today!



# RETROFIT MIRROR TVS

Custom Elegance Meets Modern Technology



Transform your cherished frames into stunning centrepieces with our Retrofit Mirror TVs. Whether it's a family heirloom or a piece that perfectly complements your décor, we can seamlessly integrate a high-definition television into your existing frame, creating a unique and functional work of art. Our Retrofit Mirror TVs offer the perfect balance of tradition and innovation, allowing you to preserve your personal style while incorporating state-of-the-art technology into your home.

## TAILORED GLASS OPTIONS FOR YOUR UNIQUE VISION

With our Retrofit Mirror TVs, you can choose from several premium glass types to perfectly match your design preferences:

- **Vanity Mirror TV Glass:** This option offers a flawless, reflective surface when the TV is off, making it indistinguishable from a standard mirror. It's ideal for rooms where a classic, unobtrusive look is desired, such as living rooms, bedrooms, or bathrooms.
- **Grey Dielectric TV Mirror Glass:** For a contemporary touch, the Grey Dielectric TV Mirror Glass provides a subtle grey tint that enhances the overall aesthetic of the room while delivering a clear and vibrant picture when the TV is on. This option is perfect for modern and minimalist interiors.
- **Bronze Dielectric TV Mirror Glass:** This option gives your frame a sophisticated bronze tint that pairs beautifully with traditional, rustic, or eclectic décor, all while ensuring a high-quality viewing experience.

## KEY FEATURES:

- **Bespoke Integration:** We expertly incorporate a high-definition TV into your existing frame, ensuring a perfect fit and flawless finish.
- **Invisible Technology:** The TV is completely hidden behind the mirror when not in use, allowing your frame to retain its original beauty and function as a mirror.
- **Custom Glass Options:** Choose from Vanity, Grey Dielectric, or Bronze Dielectric glass to match your personal style and home décor.
- **High-Definition Display:** Our Retrofit Mirror TVs feature high-definition screens, providing sharp, vibrant images for an exceptional viewing experience.
- **Side Depth Adjustment:** To ensure a perfect fit, we can add side depth to your frame, allowing it to cover the distance from the front of the TV to the wall. This adjustment ensures seamless integration, regardless of the TV's size.
- **Expert Craftsmanship:** We take great care in transforming your frame, ensuring that the

# RETROFIT MIRROR TVS



final product is a seamless blend of tradition and technology.

- **Durable and Long-Lasting:** Built with premium materials, our Retrofit Mirror TVs are designed for longevity, providing you with years of enjoyment.

## WHY CHOOSE TO RETROFIT YOUR FRAME INTO A MIRROR TV?

- **Personalised Design:** Preserve the integrity of your chosen frame while incorporating modern technology, creating a bespoke piece that's uniquely yours.
- **Space-Saving Solution:** Eliminate the need for separate mirrors and TVs, freeing up space and reducing clutter in your home.
- **Seamless Aesthetics:** With a range of glass options, you can ensure your Retrofit Mirror TV perfectly complements your existing décor, from classic to contemporary styles.
- **Innovative and Functional:** Enjoy the latest in television technology without compromising the aesthetic value of your space.

Elevate your living space with a Retrofit Mirror TV, where your favourite frame meets cutting-edge technology. Choose from our selection of glass types to create a bespoke piece that reflects your style while offering the convenience of a hidden TV. To find out more about pricing and to discuss your custom requirements, please get in touch with us today. Experience the perfect fusion of tradition and innovation with our expertly crafted Retrofit Mirror TVs.

# FRAMES FOR SAMSUNG THE FRAME TV

Our Wooden TV Frames, Especially Designed For Samsung The Frame TV Have Available A Variety Of Luxurious Finishes, Allowing You To Choose The Perfect One That Complements Your Decor.

Whether It's A Warm Walnut Tone For A Cozy Feel Or A Sleek Ebony Finish For A Modern Look, Our Frames Let You Express Your Unique Style Effortlessly.

Designed With Precision, These Frames Seamlessly Integrate With Your Samsung The Frame TV, Giving The Illusion Of A Genuine Piece Of Art On Display.

The Easy Installation Process Ensures A Snug Fit And An Instant Upgrade To Your Entertainment Setup.



REGENT



ATHENS



DARCY GOLD



SYDNEY BLACK WITH SILVER TRIM



SYDNEY BLACK WITH GOLD TRIM



SYDNEY BLACK WITH GOLD TRIM



SYDNEY BLACK WITH GOLD TRIM



# FRAMES FOR SAMSUNG THE FRAME TV

## EVEREST



EVEREST BLACK AND ORANGE



EVEREST BRONZE



EVEREST GOLD



EVEREST LIGHT GOLD



EVEREST SILVER

## NEW YORK



NEW YORK BLACK AND ORANGE



NEW YORK BRONZE



NEW YORK GOLD



NEW YORK SILVER



# FRAMES FOR SAMSUNG THE FRAME TV

## ART DECO FRAMES



ART DECO BLACK



ART DECO CHARCOAL



ART DECO GOLD



ART DECO NATURAL OAK VANEER



ART DECO SILVER



ART DECO WALNUT OAK VANEER



ART DECO WHITE

# MOTORISED ARTWORK TV FRAMES

When a Mirror doesn't quite fit into your home décor, one of our Moving Artwork TV Frames can be used to create a completely discrete and unique solution to hiding a television.

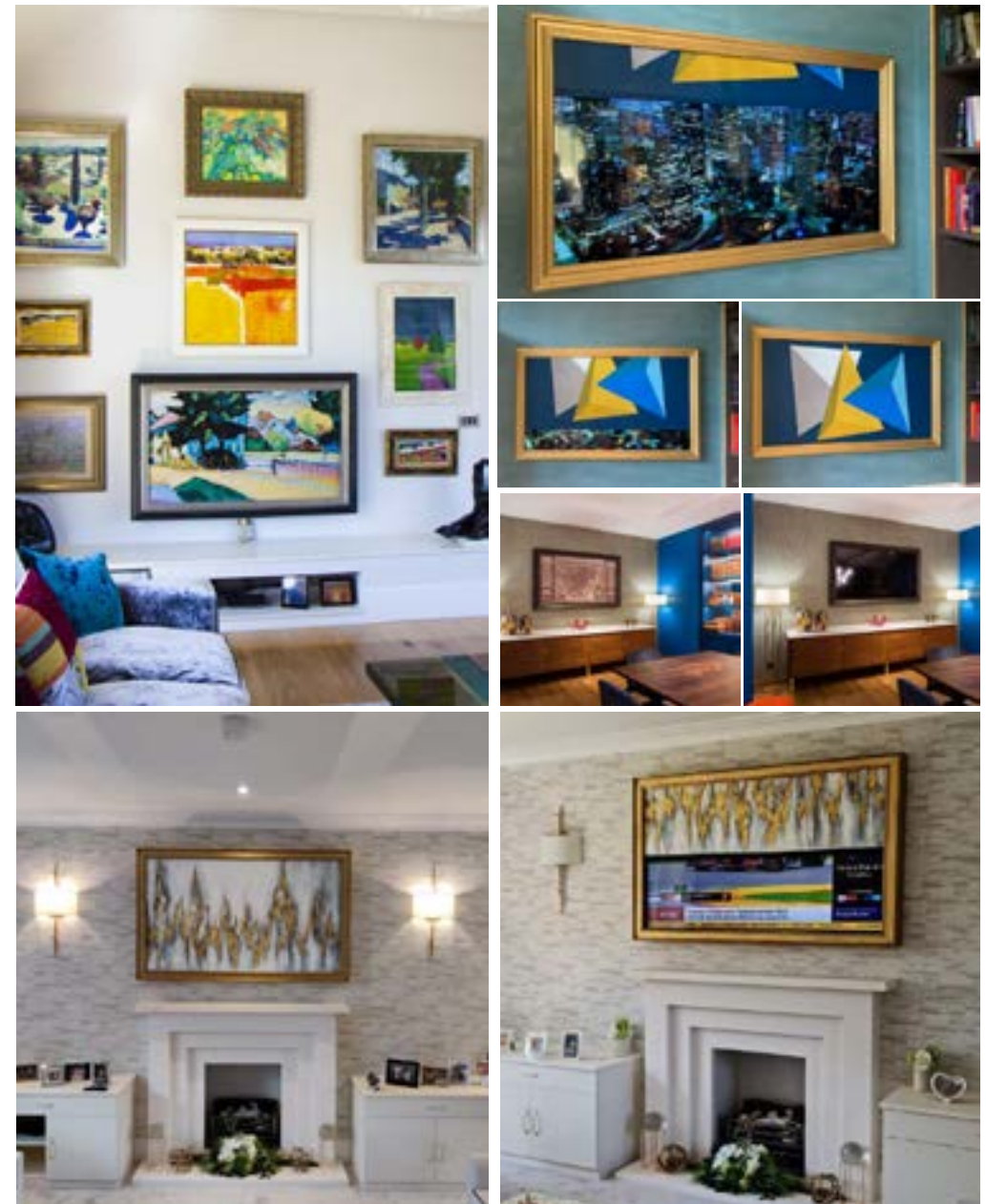
There no longer exists a need to choose between art and television. With our moving artwork, your choice of painting can become the centrepiece of any room.

When you want to watch the television, press a button and the canvas smoothly rolls back to reveal your flat screen. You can supply your own artwork in digital format, or we can create a high-resolution photograph of your favourite work to incorporate into the frame.

Each painting is created from a professional giclée print applied to a special canvas designed for continuous movement. Moving artwork can be incorporated into any of our bespoke TV Frames and our design advisers will be able to help you select both your artwork, and the frame which will bring your love of art and technology together.

For inspiration, our website has a selection of popular art prints to use with our Moving Artwork frames. We can also use any photograph or art image of your choice. If you prefer to have an oil on canvas painting, then we can get any image you want painted by an artist and incorporated into your TV Frame of choice.

Placed either on the wall or within a recess, the TV is hidden behind your own chosen piece of art which is either printed or hand painted onto an authentic Polyester canvas to ensure the real appearance of a hanging piece of Art. From Van Gogh to Family memories, you can choose the perfect way to completely conceal your Television behind your chosen piece of Art.





# MOTORISED ARTWORK TV FRAMES

Elevate your living space with our Motorised Artwork TV Frames. Perfectly combining technology and aesthetics, these frames display your chosen artwork when your TV is off, transforming it into a stunning centerpiece. With just a press of a button, the canvas rolls back to reveal your TV, offering a seamless blend of functionality and style.



THE LA CLASSICO

**SPECIFICATIONS:**

Hardwood Oak or Tulipwood

Dimensions: 90mm Face width.

Depth is bespoke based on your requirements.

[Click for information](#)



THE NEW YORK

**SPECIFICATIONS:**

Dimensions: 70mm Face width.

Depth is bespoke based on your requirements.

[Click for information](#)



THE EVEREST

**SPECIFICATIONS:**

Dimensions: 70mm Face width.

Depth is bespoke based on your requirements.

[Click for information](#)



THE PATTERNA

**SPECIFICATIONS:**

Dimensions: 90mm Face width.

Depth is bespoke based on your requirements.

[Click for information](#)



THE REGENCY

**SPECIFICATIONS:**

Ornaments are hand laid allowing you to bespoke your desired finished model

Dimensions: 80- 100mm Face width.

Depth is bespoke based on your requirements.

[Click for information](#)



THE VENEER

**SPECIFICATIONS:**

Dimensions: 90mm Face width.

Depth is bespoke based on your requirements.

This frame can be slimmed down

[Click for information](#)

# MOTORISED ARTWORK TV FRAMES



THE BARBICAN

**SPECIFICATIONS:**

Hardwood Oak or Tulipwood

Dimensions: 90mm Face width.

Depth is bespoke based on your requirements.

[Click for information](#)



THE KINGSTON

**SPECIFICATIONS:**

Dimensions: 90mm Face width.

Ornaments protrude 50mm

Depth is bespoke based on your requirements.

[Click for information](#)



THE EXQUISITE

**SPECIFICATIONS:**

Dimensions: 135mm Face width.

Depth is bespoke based on your requirements.

[Click for information](#)



THE FLEMISH

**SPECIFICATIONS:**

Dimensions: 135mm Face width.

Depth is bespoke based on your requirements.

[Click for information](#)



THE CARLO

**SPECIFICATIONS:**

Dimensions: 80-100 mm Face width.

Depth is bespoke based on your requirements.

[Click for information](#)



THE SURREY

**SPECIFICATIONS:**

Flat slim profile with foil

Dimensions: 90mm Face width.

Depth is bespoke based on your requirements.

[Click for information](#)



# BESPOKE HIGH BRIGHTNESS 4K SMART TVS (LUXVIEW)

Highlight the features and benefits of LuxView TVs.



## LUXVIEW TV™

LuxView TV™ is the culmination of our dedication to clarity and quality. Specially manufactured to enhance the viewing experience across all our Mirror TV products, LuxView TV™ brings you the best of both worlds: a superior mirror and an outstanding television.



The professional solution for TVs that are placed behind glass, for the maximum viewing quality.

## 22" LUXVIEW TV

21.5" IPS Wide view LED BLU UHD LCD

1000cd/m2 screen brightness

DVB-T/T2/S/S2 TV

Hotel Mode Supported

HDMI 1.4a HDCP 1.4

RS232 Control

Optional IP Control

External AC/DC power adaptor

Aluminium chassis semi gloss black powder coat finish

## BESPOKE HIGH BRIGHTNESS 4K SMART TVS (LUXVIEW)



### 32" LUXVIEW TV

21.5" IPS Wide view LED BLU UHD LCD  
1000cd/m2 screen brightness  
DVB-T/T2/S/S2 TV  
Hotel Mode Supported

HDMI 1.4a HDCP 1.4  
RS232 Control  
Optional IP Control  
External AC/DC power adaptor  
Aluminium chassis semi gloss black  
powder coat finish

### 43" LUXVIEW TV

4K 43" IPS Wide view LED BLU UHD LCD  
1000cd/m2 screen brightness  
Android 9.0 Smart TV  
DVB-T/T2/S/S2 TV  
Hotel Mode Supported  
Supports HDTV at 720p & 1080i and 1080P  
CEC supported

HDMI supports 2.0b/1.4a/2.1  
HDCP 2.2 / 1.4 compliant  
RJ45 and Wifi internet access  
RS232 or IP Control  
External AC/DC power adaptor  
Aluminium chassis semi gloss black  
powder coat finish

### 50" LUXVIEW TV

4K 50" IPS Wide view LED BLU UHD LCD  
1000cd/m2 screen brightness  
Android 9.0 Smart TV  
DVB-T/T2/S/S2 TV  
Hotel Mode Supported  
Supports HDTV at 720p & 1080i and 1080P  
CEC supported

HDMI supports 2.0b/1.4a/2.1  
HDCP 2.2 / 1.4 compliant  
RJ45 and Wifi internet access  
RS232 or IP Control  
External AC/DC power adaptor  
Aluminium chassis semi gloss black  
powder coat finish

### 55" LUXVIEW TV

4K 55" IPS Wide view LED BLU UHD LCD  
1000cd/m2 screen brightness  
Android 9.0 Smart TV  
DVB-T/T2/S/S2 TV  
Hotel Mode Supported  
Supports HDTV at 720p & 1080i and 1080P  
CEC supported

HDMI supports 2.0b/1.4a/2.1  
HDCP 2.2 / 1.4 compliant  
RJ45 and Wifi internet access  
RS232 or IP Control  
External AC/DC power adaptor  
Aluminium chassis semi gloss black  
powder coat finish

### 65" LUXVIEW TV

4K 65" IPS Wide view LED BLU UHD LCD  
1000cd/m2 screen brightness  
Android 9.0 Smart TV  
DVB-T/T2/S/S2 TV  
Hotel Mode Supported  
Supports HDTV at 720p & 1080i and 1080P  
CEC supported

HDMI supports 2.0b/1.4a/2.1  
HDCP 2.2 / 1.4 compliant  
RJ45 and Wifi internet access  
RS232 or IP Control  
External AC/DC power adaptor  
Aluminium chassis semi gloss black  
powder coat finish

### 75" LUXVIEW TV

4K 75" IPS Wide view LED BLU UHD LCD  
1000cd/m2 screen brightness  
Android 9.0 Smart TV  
DVB-T/T2/S/S2 TV  
Hotel Mode Supported  
Supports HDTV at 720p & 1080i and 1080P  
CEC supported

HDMI supports 2.0b/1.4a/2.1  
HDCP 2.2 / 1.4 compliant  
RJ45 and Wifi internet access  
RS232 or IP Control  
External AC/DC power adaptor  
Aluminium chassis semi gloss black  
powder coat finish

### 85" LUXVIEW TV

4K 85" IPS Wide view LED BLU UHD LCD  
1000cd/m2 screen brightness  
Android 9.0 Smart TV  
DVB-T/T2/S/S2 TV  
Hotel Mode Supported  
Supports HDTV at 720p & 1080i and 1080P  
CEC supported

HDMI supports 2.0b/1.4a/2.1  
HDCP 2.2 / 1.4 compliant  
RJ45 and Wifi internet access  
RS232 or IP Control  
External AC/DC power adaptor  
Aluminium chassis semi gloss black  
powder coat finish

## TV MOUNTS & INSTALLATIONS

Our team of professional audio and video installers can ensure that both your TV and Frame are mounted correctly for viewing. Whether it is a single installation, multiple televisions, or cinema rooms with fully integrated home automated control system and any bespoke installations you may require, we ensure the highest quality installation at a time convenient for you.



### **UM105L SUPER THIN ULTIMATE MOUNTS SUPER FLAT TV WALL BRACKET FOR UP TO 90"TVS**

Suitable for screens from 50" to 90"  
Distance to the wall only 22mm. Maximum load capacity  
up to 80kg.  
Materials is powder coated carbon steel. Installation  
compatibility: solid wall and single stud.



### **PFW 6850 DISPLAY WALL MOUNT TURN AND TILT**

The PFW 6850 is an ultra slim wall mount for displays up to 40kg / 88 lbs. that provides two options for the swing arm placement, allowing the mount to swing out from the left or right, based on the installation requirements. The swing-out arm extends 76 cm from the wall and provides 15° of downward tilt to achieve the desired viewing angle from virtually anywhere in a room. The lightweight aluminium mount retracts smoothly and easily to a very thin 3,8 cm from the wall. To keep power and cables protected when pulling or pushing the display, cable management channels are built into the arm.



### **PS40 ARTICULATED TV WALL MOUNT 40"- 75"**

Part of the smoothest and most reliable articulated TV wall mount range on the market, the PS40 bracket's unique scissor arm design allows perfect parallel movement and easy one handed operation even with heavy screens. Suitable for screens from 40" to 75" the PS40 Manual Articulated TV Wall Bracket is ideal for use either a pull and turn bracket, or a maintenance bracket.

# TV MOUNTS & INSTALLATIONS



## **PFW 6851 DISPLAY WALL MOUNT TURN AND TILT**

The PFW 6851 is a swingout mount for displays up to 80 kg / 175 lbs. Typically fits displays ranging from 42 - 85 inch or displays with a mounting pattern of 200 x 200 mm to 800 x 600 mm.

The PFW 6851 allows up to 45° of swivel to both sides, 10° of tilt and extends up to 40 cm from the wall.



## **PSE90 MOTORISED ARTICULATED TV WALL MOUNT 46"- 65"**

Suitable for screens from 46" to 65", the Future Automation PSE90 Motorised Articulated TV Wall Mount allows installers to utilise wall space adjacent to the normal viewing position to mount the screen. With 6 programmable positions, each recallable over IR, RS232 and contact closure, the PSE90 can be programmed to service multiple viewing positions in a room, while on board electronics and built in cable management enable clean and simple installation.



## **EAD ELECTRIC ADVANCE & DROP TV WALL MOUNT**

The Electric Advance and Drop TV Wall Mount is a one of a kind bracket designed to move a flat screen vertically to a more desirable viewing height. The down and out movement make this ideal for mounting a TV over a fireplace as the EAD moves forward to clear a mantle piece and then drops down for a more favourable viewing position. A truly unique and creative solution.



# TV MOUNTS & INSTALLATIONS



## **LSM TV LIFT 42"-79"**

The LSM motorised TV lift mechanism is ideal for concealing screens from approximately 42" to 79" in a cabinet or similar space. Compatible with all major home automation control standards, such as Crestron, AMX and Lutron, the LSM range is perfect for integrating into a smart home environment.



## **FM TV FLOOR MOUNT**

The TV Floor Mount offers a simple free standing mounting solution for Flat Screen Televisions. A stainless steel tube and base give this TV floor mount a timeless look and feel and the manual swivel function ensure that the screen can be viewed in more than one viewing position. Fully concealed cable management. Stainless steel finish. Bi-directional Swivel. Universal mounting frame. FM also available with a black base



## **I-LSM INVERTED TV LIFT 42"-65"**

The I-LSM inverted TV lift is a vertical ceiling lift that allows a Flat Screen Television to be concealed in a ceiling void and dropped down for viewing. Ideal for use when there is no space available in the room itself for a permanent screen position, the I-LSM allows a screen to be hidden in what would normally be unusable due to access, and motorised down into the room to a perfect viewing position when required.

# TESTIMONIALS

## MARRIOTT



"The framed TVs harmonise perfectly with the décor of our hotels, creating a co-ordinated and welcoming environment for our customers."

## YAHOO!



We were delighted with both the unique product and service quality supplied by Frame Your TV. The TV frames vastly improved the visual interest of our display and we hope to include them as a permanent part of future Yahoo exhibitions."

## ANNA RYDER-RICHARDSON



"Its Lucy from '60-Minute Makeover', it was lovely to speak to you just now about your company 'Frame Your TV and thank you again for designing and supplying your product for the first programme of the series - we are very excited to feature it, as is the designer."

## STEVEN FRAYNE



"Thank you Frame Your TV for an amazing product and service! When I get more TV's I will definitely frame them."



"Working with Frame Your TV on our Westfield Mirror was a really great experience. On the day of our event, Frame Your TV had technological support on standby, and were extremely professional throughout. Their product was really well received and generated significant press coverage for our client, Westfield."

## GOK WAN



"FrameYourTV is a dependable, customer oriented company that provides excellent quality and service. As a fashion Consultant, I'm always on the lookout for design concepts and ideas. FrameYourTV products have been a reliable source for my home décor creativity. My clients are amazed with the aesthetic design and concept of my new TV Mirror Frame."

# SECTORS



HIGH-END RESIDENTIAL



HOUSES OF WORSHIP



MARINE



HOTELS



CLUBS AND BARS



OFFICES



RETAIL



HAIR SALOONS

# WARRANTY & SUPPORT

Trust, safe and support services



## SAFETY AND SECURITY

---

Our creations are built with the utmost attention to detail, ensuring both elegance and safety.



## GUARANTEE

---

We stand by the excellence of our workmanship, offering robust guarantees.



## FLEXIBILITY

---

We provide versatile solutions that cater to evolving tastes and technologies.



# FREQUENTLY ASKED QUESTIONS (FAQS)



## ● WHAT IS THE PRICING?

The pricing for our TV Mirrors and Art TVs varies depending on several factors, including:

**Size of the TV:** Larger screens typically involve more advanced integration and may require different mounting solutions.

**Finish and Product Options:** The type of glass (Vanity, Grey Dielectric, Bronze Dielectric) and frame finishes can influence the overall cost. Bespoke or customised finishes will also affect pricing.

**Scope of Installation:** Simple installations using standard mounting brackets may fall within our fixed pricing options. However, more complex installations, such as motorised art TVs or bespoke projects, may require additional work, such as site surveys, custom framing, or advanced setup, which will be reflected in the final price.

We offer standard pricing for many of our fixed products, which can give you a good starting point for budgeting. However, for customised options or more detailed installations, we recommend getting in touch with us directly. Our team will be happy to provide a tailored quote based on your specific requirements.

For more information or to discuss your project in detail, please contact us, and we'll be glad to assist you with accurate pricing and guidance.

## ● HOW DOES THE INSTALLATION OF TV MIRRORS WORK?

Installation of your TV Mirror is a straightforward process, but it does require some preparation:

**1 Mounting Brackets and Motorised Art TVs:** We will install the TV Mirror using secure mounting brackets that are attached to your wall. These brackets ensure that the TV Mirror is safely and securely positioned. For more advanced installations, such as motorised art TVs, we'll ensure that all mechanisms are correctly installed and functioning smoothly.

**2 Power Sockets:** To ensure a clean, seamless look, we recommend installing power sockets behind or near the TV Mirror. This can be done by us prior to the installation, or your electrician can handle it. We'll provide all the necessary specifications in advance so you can have everything ready before our visit.

**3 Professional Installation and Setup:** Our team will handle the complete installation process, including:

- Mounting the TV Mirror securely and ensuring it's properly aligned.
- Connecting the TV to your Wi-Fi network.
- Setting up any external sources or devices, such as media players, gaming consoles, or cable boxes.

**4 Bespoke Mirror Installation:** For custom mirror projects, we may need to conduct a site survey. This allows us to assess your space and ensure the installation is perfectly tailored to your requirements.

## ● DO I NEED TO BUY A SPECIFIC TV ?

We offer two options for the TV component of your Mirror TV:

**1 High Brightness, Purpose-Built TVs:** We manufacture our own high brightness TVs specifically designed to be placed behind glass. These TVs are engineered to provide optimal clarity and brightness, even in well-lit environments, ensuring that your viewing experience is uncompromised.

**2 Standard TVs from Leading Brands:** You can also use regular TVs from top brands such as Samsung or LG, which we supply. While these TVs offer excellent performance, it's important to note that they may not be as bright as our purpose-built models. When using a standard TV, you may need to control the lighting in the room more carefully to ensure the best possible picture quality.

Both options are available to suit your needs and preferences.

## ● HOW DO MIRROR TVS WORK?

Mirror TVs are an innovative combination of a television and a mirror, seamlessly integrated into one sleek unit. Here's how they work:

▪ **Dielectric TV Mirror Glass:** The key component of a Mirror TV is the dielectric TV mirror glass, which has special properties that allow light to pass through while maintaining a reflective surface.

▪ **TV Integration:** A television is built and integrated directly behind this dielectric mirror glass. When the TV is turned on, the light from the screen shines through the glass, allowing you to watch your favourite shows and movies with excellent clarity.

# FREQUENTLY ASKED QUESTIONS (FAQS)



▪ **Mirror Functionality:** When the TV is turned off, the glass functions as a mirror, with no visible sign of the television behind it. This creates a clean, elegant look that enhances your décor without the distraction of a visible screen.

This dual functionality makes Mirror TVs a perfect blend of style and technology, providing a seamless solution for spaces where you want both a mirror and a TV without compromising on aesthetics.

## ● WHAT FRAME FINISHES AND OPTIONS ARE AVAILABLE FOR MIRROR TVS?

We offer a wide variety of frame finishes and options to complement your Mirror TV and suit your interior design:

▪ **Luxury Finishes:** Choose from premium finishes such as 24k gold leaf, silver leaf, and other high-end materials for an opulent, sophisticated look.

▪ **Painted Finishes:** We provide a range of painted finishes in various colours, allowing you to select a hue that perfectly complements your décor.

▪ **Wooden Frames:** Our wooden frames come in different types of wood and stains, from classic oak and walnut to more exotic options, giving you a warm, natural aesthetic.

▪ **Metal Frames:** For a modern or industrial look, consider our metal frames, available in various finishes including brushed, polished, and powder-coated options.

▪ **Museum-Quality Ornate Frames:** For a truly exceptional and timeless appearance, we offer museum-quality ornate frames. These frames feature intricate designs and craftsmanship, adding an element of grandeur and elegance to your Mirror TV.

▪ **Custom Frame Options:** In addition to our standard selections, we offer fully bespoke frames tailored to your specific requirements. This can involve a combination of materials such as wood, glass, and metal, with custom paint or powder coating finishes to achieve the perfect look. We can also accommodate unique shapes and sizes to fit any space.

With our extensive range of finishes and frame options, including the possibility for complete customisation, we can create a frame that not only enhances your Mirror TV but also aligns with your personal style and home décor.

## ● CAN MIRROR TVS AND ART TVS BE INTEGRATED INTO A SMART HOME SYSTEM?

Yes, our Mirror TVs and Art TVs can be seamlessly integrated into virtually any smart home system. Whether you're using systems like Crestron, Control4, Savant, or any other home automation platform, our products are compatible and can be easily incorporated.

We can also liaise with your AV company or home automation specialists to ensure smooth integration and functionality, making sure that your Mirror TV or Art TV works perfectly within your existing setup.







## GET IN TOUCH

ANY QUESTIONS?  
CONTACT US.

INSTANT EXPERT CONSULTATION

**0208 954 5213**

EMAIL US

**[enquiries@frameyourtv.co.uk](mailto:enquiries@frameyourtv.co.uk)**

## VISIT OUR SHOWROOM

**Unit 4 Stirling Way,  
Borehamwood, Herts, WD6-2BT**

Monday - Friday: **9:00 - 18:00**

Saturday: **10:00-15:00**

Sunday: **Closed**



Phone: 0208 954 5213

Email: [enquiries@frameyourtv.co.uk](mailto:enquiries@frameyourtv.co.uk)

Address: Unit 4 Stirling Way, Borehamwood, Herts, WD6-2BT

Web: [www.FrameYourTV.co.uk](http://www.FrameYourTV.co.uk)

